

Prepare - Act - Survive



Why Bolwarra is at risk of bushfire

Parts of Bolwarra are at an **EXTREME** bushfire risk. Local residents and visitors should be prepared for fire and have a plan for when the Fire Danger Rating is **SEVERE**, **EXTREME** or **CODE RED**.

This community information guide includes a map containing key elements of Bolwarra's bushfire risk. At the time of publication, there are **NO** designated Neighbourhood Safer Places – Places of Last Resort at Bolwarra.

Important community bushfire safety information is provided to help you make informed decisions about how to survive a bushfire, whether you're a local resident or a visitor to the area. Planning and preparation can save lives in a bushfire. Use this community information guide to help you and your family to prepare.



Prepare

It's important if **you** live, work and travel in this area, to plan what **you** will do if a bushfire threatens.

Understand **your** bushfire risk

- When there is smoke over the area, there is a high likelihood that there will be fire travelling towards it.
- Worst case fires will be coming from a north or north-west direction or from the south-west after a south-westerly wind change.
- The fuels surrounding these areas include a mixture of grasses and forests which contain both stringybark and ribbon bark species. A fire coming from forests in any of these directions may cause multiple spot fires to occur up to 30 minutes ahead of the fire front arriving. Fire fronts could also be faster if moving through grasses and travelling up to 15km/h under Extreme or Code Red Fire Danger Ratings, and therefore may arrive far sooner.
- Know the daily Fire Danger Rating in the district where you live or travel **www.cfa.vic.gov.au**

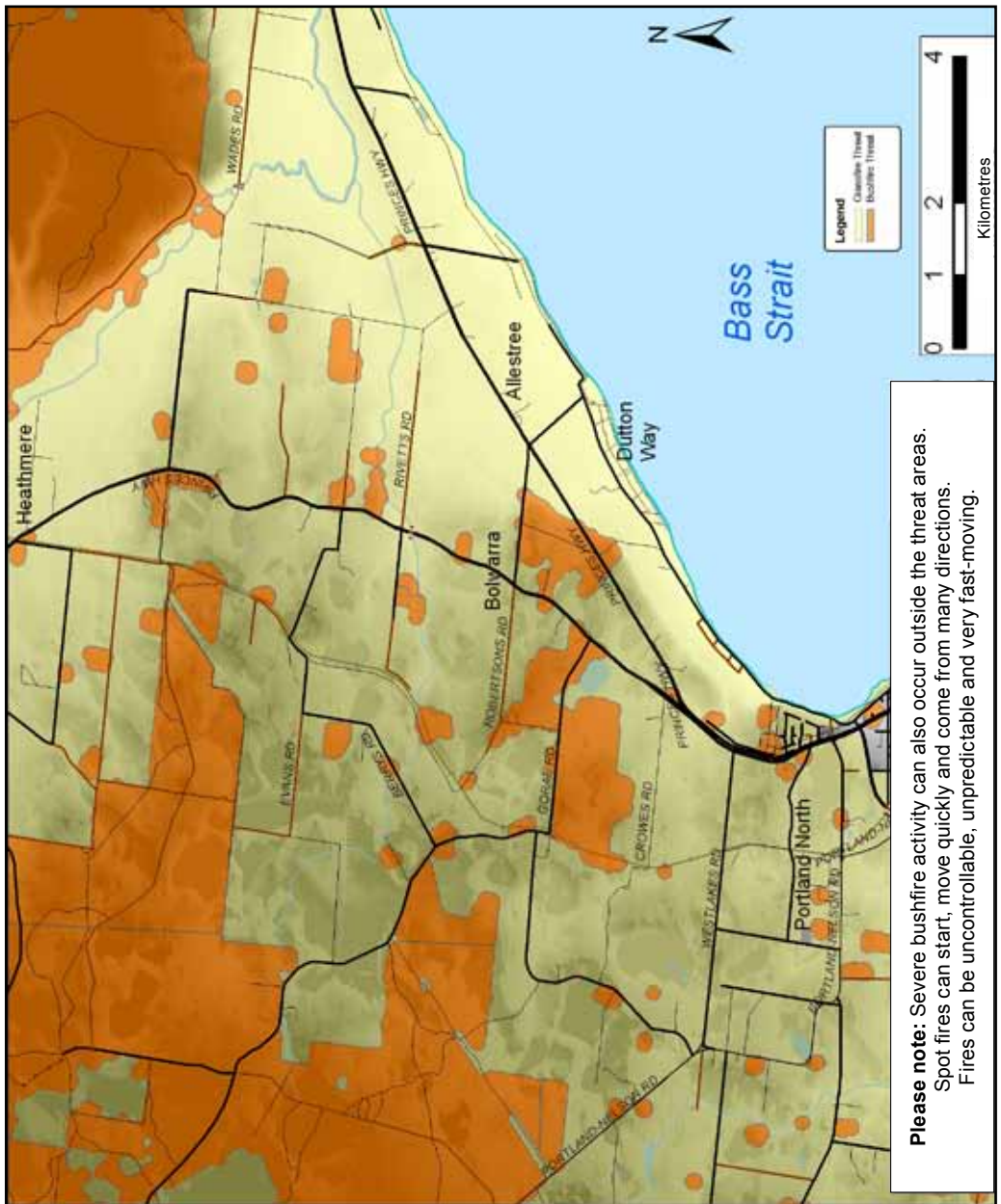
Reduce **your** bushfire risk

- Homes with too much vegetation and other flammable materials close to them are difficult to protect from bushfires.
- Take advantage of rubbish removal and green waste disposal opportunities.
- Prepare your home and property against bushfire, burning embers and radiant heat.
- Even if your plan is to leave early, a well-prepared home has a greater chance of not being destroyed by bushfire.
- Assist your neighbours to reduce their bushfire risk as this may help make your property safer.
- **Develop and practise your Bushfire Survival Plan.**
- **You will also need to plan for your pets' safety.**
- You can attend or join:
 - A local Fire Ready Victoria meeting
 - A Bushfire Planning Workshop
 - A neighbourhood Community Fireguard Group
- **The Household Bushfire Self-Assessment Tool is available to help individuals assess the bushfire risk on their own property.**



You can download the CFA FireReady kit, containing the full Leaving Early Planning Template from **cfa.vic.gov.au**, or call **1800 226 226 (TTY 1800 122 969)**

Bolwarra Bushfire Threat Map





Prepare

FACT

It is your responsibility to prepare yourself, your family and your home for the threat of bushfire. You need to act decisively in accordance with your **Bushfire Survival Plan** when bushfires threaten. Your survival depends on your preparations and the decisions you make.



Leave early

Leaving early is always the safest option.

Leaving early is more important when:

- The Fire Danger Rating is **CODE RED**. Homes aren't designed to withstand a bushfire during these conditions. Any fire that starts and takes hold will be so intense that you won't be safe to stay and defend your home – no matter how well-prepared it is.
- There are children, elderly or disabled people in your home. People who are vulnerable due to age, health, or any other reason, should always leave early.
- You have not prepared yourself or your property to give you and your home the best level of protection from a fire.
- Your house is not defensible. Some homes are not safe to defend because of their location or construction.

If you plan to leave, then you should leave well before a fire reaches your area and well before you are under threat. Follow the actions recommended for the Fire Danger Rating of the day (see pages 6 and 7). **Visit CFA website www.cfa.vic.gov.au**

Where will you go?

- Is it a safe choice? You may choose somewhere that suits your personal needs and circumstances, e.g. a family member's house in an urban area with a backyard for your pet, or shopping centre complex, or central business district of a large regional centre.
- If you don't have any other options, you may wish to consider the following townships:
Portland, Heywood and Warrnambool.

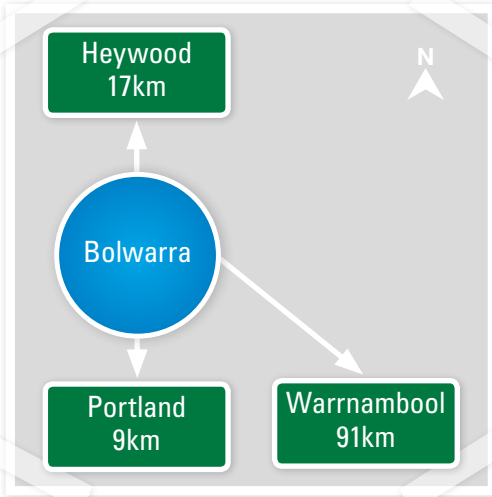
If you - or someone you care for - will need help to prepare and leave early when there is high fire risk, obtain a Red Cross **Bushfire: Preparing to leave early guide** at **www.cfa.vic.gov.au** or request a copy by phoning the **VicEmergency Hotline 1800 226 226**

PREPARE. ACT. SURVIVE.

PREPARE. You must make important decisions before the fire season starts.

ACT. The higher the Fire Danger Rating, the more dangerous the conditions.

SURVIVE. Fires may threaten without warning, so you need to know what you will do to survive.



- The main access roads in and out of Bolwarra are Henty Hwy and Princes Hwy.
- Roads may become congested and may quickly become impassable.
- Falling trees may block roads.
- Burning roadside vegetation will create radiant heat.



How you can stay in touch

- Bookmark the VicEmergency webpage (www.emergency.vic.gov.au).
- Follow CFA on Twitter (www.twitter.com/cfa_updates).
- Join the CFA Facebook page (www.facebook.com/cfavic).
- Access the CFA mobile website at www.cfa.vic.gov.au/mobile
- Download the VicEmergency app if you have a smartphone or tablet Apple (App Store) and Android (Google play).
- Beware, cordless home phones will NOT work if the mains power supply is cut.
- Wireless communications, internet and landlines may vary between service providers.
- Mobile phone coverage in and around Bolwarra is generally poor and may not be accessible during times of emergency and may vary between service providers.
- There are no community-alerting sirens operating in this township.
- Sirens sounding nearby are a trigger for you to seek information, as they may indicate fire activity in your area. When you hear a siren, further information may be available via ABC local radio, commercial and designated community radio stations, and SKY News TV (see page 16).



A written fire plan may save your life - would you remember a plan that's just in your head if your surrounded by smoke, heat, flame and noise?

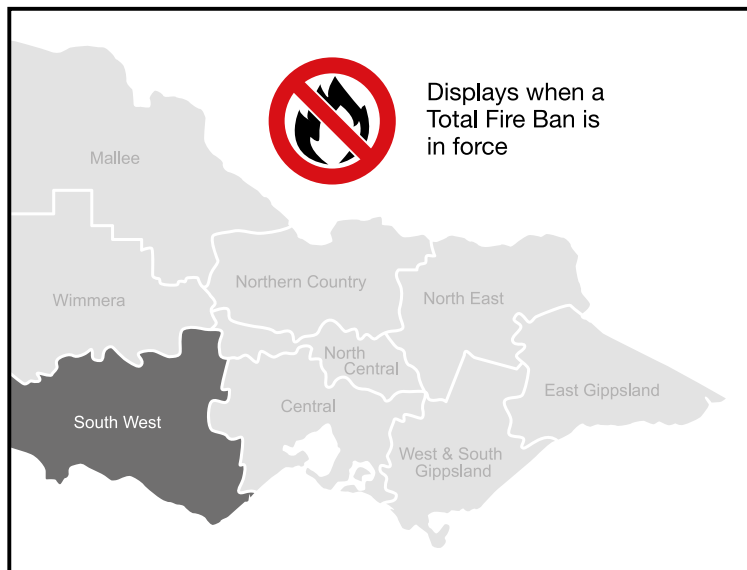


Act

Note *your* district's
Fire Danger Rating
daily as *your* trigger
to act.



Bolwarra is in the South West Fire District



Triggers

CODE RED

EXTREME

SEVERE

VERY HIGH

HIGH

LOW- MODERATE

Actions

What does it mean?	What should I do?
<p>These are the worst conditions for a bush or grass fire.</p> <p>Homes are not designed or constructed to withstand fires in these conditions.</p> <p>The safest place to be is away from high risk bushfire areas.</p>	<p>Leaving high risk bushfire areas the night before or early in the day is your safest option – do not wait and see.</p> <p>Avoid forested areas, thick bush and long, dry grass.</p> <p>Know your trigger.</p> <p>Make a decision about:</p> <ul style="list-style-type: none"> –when you will leave –where you will go –how you will get there –when you will return –what you will do if you cannot leave
<p>Expect extremely hot, dry and windy conditions.</p> <p>If a fire starts and takes hold, it will be uncontrollable, unpredictable and fast moving. Spot fires will start, move quickly and will come from many directions.</p> <p>Homes that are situated and constructed or modified to withstand a bushfire, that are well prepared and actively defended, may provide safety.</p> <p>You must be physically and mentally prepared to defend in these conditions.</p>	<p>Consider staying with your property only if you are prepared to the highest level. This means your home needs to be situated and constructed or modified to withstand a bushfire, you are well prepared and you can actively defend your home if a fire starts.</p> <p>If you are not prepared to the highest level, leaving high risk bushfire areas early in the day is your safest option.</p> <p>Be aware of local conditions and get information by listening to ABC Local Radio, commercial and designated community radio stations or Sky News TV, going to www.cfa.vic.gov.au or call the VicEmergency Hotline on 1800 226 226.</p>
<p>Expect hot, dry and possibly windy conditions.</p> <p>If a fire starts and takes hold, it may be uncontrollable.</p> <p>Well prepared homes that are actively defended can provide safety.</p> <p>You must be physically and mentally prepared to defend in these conditions.</p>	<p>Well prepared homes that are actively defended can provide safety – check your bushfire survival plan.</p> <p>If you are not prepared, leaving bushfire prone areas early in the day is your safest option.</p> <p>Be aware of local conditions and get information by listening to ABC Local Radio, commercial and designated community radio stations or Sky News TV, going to www.cfa.vic.gov.au or call the VicEmergency Hotline on 1800 226 226.</p>
<p>If a fire starts, it can most likely be controlled in these conditions and homes can provide safety.</p> <p>Be aware of how fires can start and minimise the risk.</p> <p>Controlled burning off may occur in these conditions if it is safe – check to see if permits apply.</p>	<p>Check your bushfire survival plan.</p> <p>Monitor conditions.</p> <p>Action may be needed.</p> <p>Leave if necessary.</p>



Act

Planned Emergency



Understanding Warnings

- A warning will be issued when any type of emergency could impact you or your property.
- Warnings aim to provide you with the best advice and information on what is happening to help you make good decisions to protect yourself and others.
- Remember: don't rely on an official warning to leave. Emergencies can start quickly and threaten you within minutes.
- Always use more than one source for your emergency information.

Evacuation

You may be advised to evacuate by police or emergency services. In fast-moving situations, you may not always receive a warning or recommendation to evacuate. Stay informed, aware of local conditions and the Fire Danger Rating, so that you can plan ahead and make the right decision in a bushfire. Leaving early is always the safest option. Refer to 'Community Evacuation Information', available at

www.police.vic.gov.au

Should a recommendation to evacuate be made, the following advice would apply:

- A fire is rapidly advancing.
- If advised, travel to the evacuation destination as advised by emergency services.
- Strictly follow all instructions and advice.



Community information

- A newsletter containing updates for communities affected by an emergency.
- Can also be used as notification that an incident has occurred but there is no threat to community.



Advice

- An incident is occurring or has occurred in the area. Access information and monitor conditions.
- Can also be used as a notification that activity in the area has subsided and is no longer a danger to you.



Warning (Watch & Act)

- An emergency is developing nearby. You need to take action now to protect yourself and others.



Emergency Warning

- You are in imminent danger and need to take action immediately.



Prepare to evacuate/evacuate now

- An evacuation is recommended or procedures are in place to evacuate.

Emergency Service Actions

Fire Agencies

- Protecting life is the highest priority
- Issue advice and warnings via official channels (see page 16)
- Control and manage fire fighting activities
- Where safe to do so, protect:
 - Identified community assets
 - Property
 - The environment

Victoria Police

- Keep people safe and property secure
- Control traffic in bushfire areas
- Manage evacuations
- Register people who have evacuated

Bolwarra

- Residents and visitors, know your risk and prepare your property
- Listen for warnings on your local radio station
- Check the CFA website for current updates

Shire of Glenelg

- Activate and support the Emergency Relief Centres when required
- Assist and support the Community to recover from the emergency

NOTE: On Code Red days, Council services may not be available

VicRoads

- Manage road closures on advice from Police and Fire Agencies
- Undertake safety inspections of roads prior to re-opening
- Provide advice to Communities about road closures

Department of Human Services

- Coordinate recovery activities for affected Communities
- Coordinate interim accommodation after the emergency
- Coordinate emergency relief grants and material aid

Bushfire Survival

WHAT TO DO

Leave Early

- When the Fire Danger Rating is Code Red, leaving early is always the safest option
- Leave early destinations could include homes of families & friends who live outside the risk area, a nearby town or built up area

Always the safest option



Well Prepared

If leaving the high-risk area is no longer an option, there may be options close to where you are that could protect you. These include:

Your safety is



For more information on how to prepare your own
www.cfa.vic.gov.au VicEmergency Hotline

Options

- A well prepared home (yours or your neighbours') that you can actively defend on Severe & Extreme Fire Danger Rating days only
- Private Bushfire Shelter (bunker) that meets current regulations
- Designated community fire refuge

not guaranteed

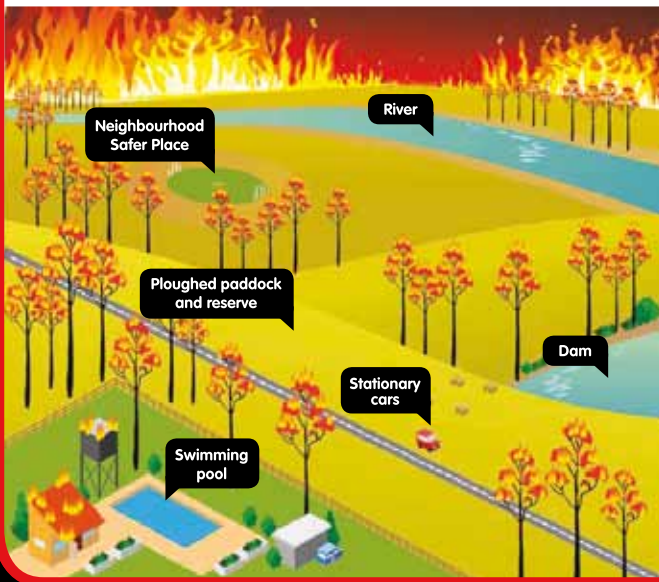


Last Resort

In situations where no other options are available to you, taking shelter in one of the below may protect from radiant heat:

- Neighbourhood Safer Place (place of last resort)
- Stationary car in a clear area
- Ploughed paddock or reserve
- Body of water (i.e. beach, swimming pool, dam, river, etc.)

High risk of trauma, injury or death



Bushfire Survival Plan:
1800 226 226

Survive

*Fire may threaten without warning so **you** need to know what to do to survive.*

Community Fire Refuges

- A Community Fire Refuge is a place that is a building open to the public that can provide short-term shelter from immediate life-threatening effects of a bushfire event.
- There is no Community Fire Refuge located in Bolwarra.

Activate **your bushfire survival plan **early****

- Remember, bushfires can happen when least expected. Planning and preparation are essential.
- A last-minute decision may cost you and your family your lives.
- **You may not receive an official warning about a bushfire.**
- Do NOT expect a fire truck at your property.
- Your safety and survival depend on what decisions you make.
- Protecting people will always be more important than property.
- Always tell someone what you are planning to do.
- Observe the weather, including the direction the wind is blowing.
- Watch what is happening around you and where the bushfire may be located.

Leaving late is **DANGEROUS**

- Travel on roads in this area during a fire is dangerous.
- You may be impacted by fire and visibility may be poor due to smoke.
- The roads may be blocked due to falling trees, collisions or emergency vehicles.
- Usual travel routes may not be accessible.
- Don't assume you can turn back as the road may have become blocked behind you.
- Lives are more likely to be lost when people make a last-minute decision to flee a bushfire.
- The risk of being overrun by bushfire is very real.
- People caught in the open are likely to face severe and often fatal levels of radiant heat.
- Leaving late is a deadly option.

It is important that you plan to leave early (see page 4). Assemble a relocation kit.

Have a relocation kit with essential items already prepared and make sure it is stored in an easily accessible place.

Some of the things that you might like to include in your kit are:

Protective clothing made from natural fibres

Woollen blankets

Water and medications

Toiletries and sanitary supplies

Mobile phone and charger

☐☐☐☐☐

Important documents

First aid kit

Cash, ATM/credit cards

Valuables and photos

Battery powered radio

☐

5

7

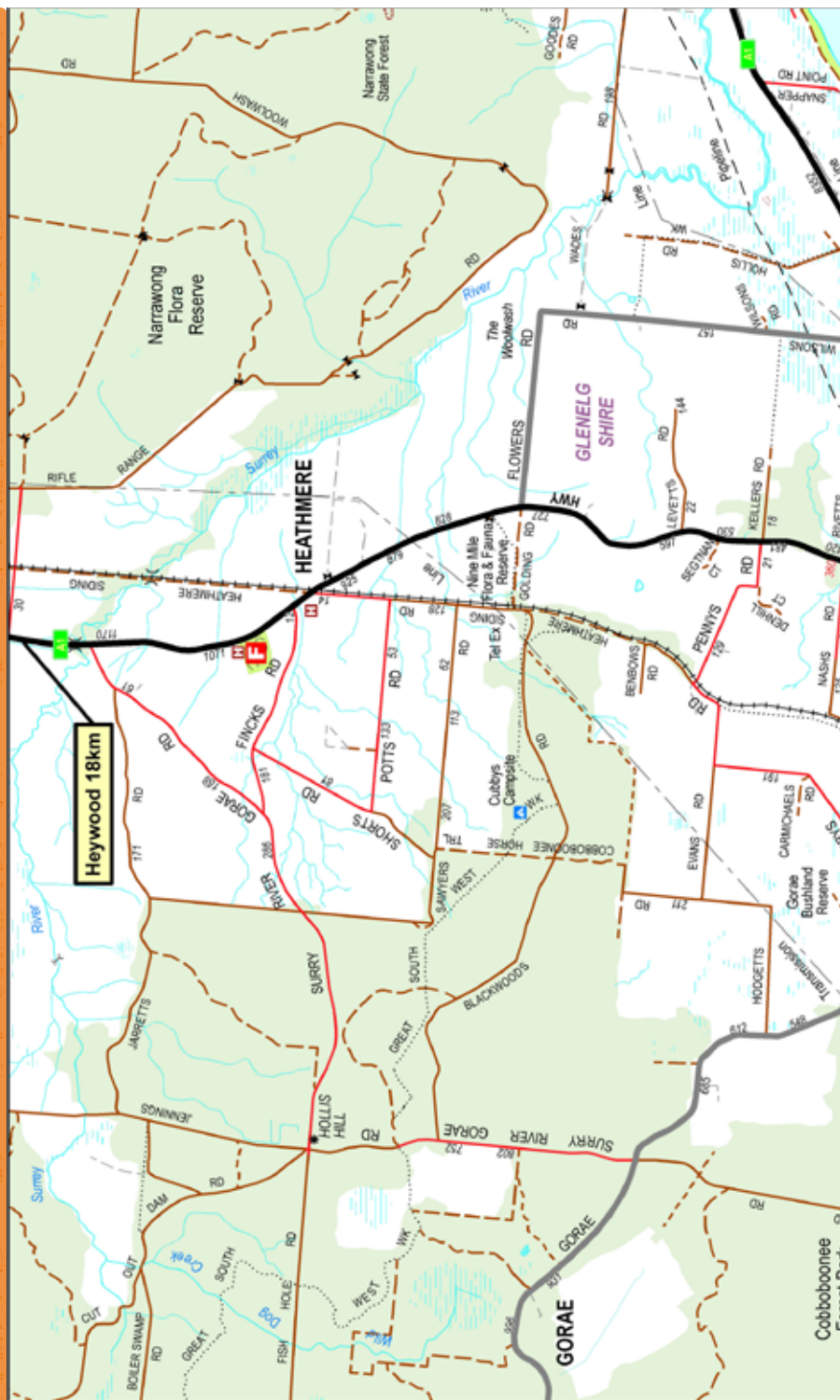
7

5



Bolwarra Community Map

Heywood 18km





Vicmap Information © The State of Victoria, Department of Environment and Primary Industries, 2013. Reproduced by permission of the Department of Environment and Primary Industries.

Disclaimer: This material may be of assistance to you, but the State of Victoria and its employees do not guarantee that the publication is without flaw of any kind, or is wholly appropriate for your particular purposes. Therefore, they disclaim all liability for any error, loss or consequences which may arise from your relying on any information contained in this material.

In EMERGENCY dial 000 (TTY 106)

Do not call Triple Zero for information or advice. Calling Triple Zero unnecessarily may put others who are in a genuine emergency situation at risk.

VicEmergency Hotline: 1800 226 226

Emergency Contact Information

Download the VicEmergency app, the official Victorian Government App for access to community information and warnings.

Monitor the VicEmergency App and tune into your emergency broadcaster and VicEmergency website (www.emergency.com.au) on days of high fire danger ratings is the most reliable way of staying informed. Mains power may be unavailable, or fail, during fire and emergencies – keep a battery powered radio available.

Emergency Broadcasters: Sky News TV, ABC 94.1 FM, ABC 774 AM, ABC 594 AM, Mixx 88.9 FM, Mixx 93.7 FM, 3YB 882 AM, Coast 95.3 FM, 3HA 981 AM, 3HA 92.9 FM

Road closures: 13 11 70 www.vicroads.vic.gov.au

National Park, State Forest and Park closures: 13 19 63 www.parkweb.vic.gov.au

School, early childhood services and bus route closures: www.education.vic.gov.au

24 Hour Wildlife Emergency: 13 000 WILDLIFE or 1300 094 535

24 Hour NURSE-ON-CALL: 1300 60 60 24

Bushfire Information:

VicEmergency website: www.emergency.vic.gov.au

CFA website: www.cfa.vic.gov.au

Follow CFA on Twitter: [www.twitter.com/cfa_updates](https://twitter.com/cfa_updates)

Join the CFA Facebook page: www.facebook.com/cfavic

FFMvic website (Planned burning): www.ffm.vic.gov.au



Further Information

Dept of Human Services: www.dhs.vic.gov.au/emergency

Forest Fire Management Victoria: 13 61 86 www.ffm.vic.gov.au

Weather: www.bom.gov.au

CFA District Office: (03) 5554 2309 (**non emergency calls only**)

Glenelg Shire Council: 1300 453 635 (1300 GLENELG) www.glenelg.vic.gov.au

Deaf, hearing impaired or speech impaired? **Contact the National Relay Service on 1800 555 677** if you use a **TTY, 1800 555 727** if you use Speak and Listen, and then ask for: **1800 226 226**